

Intuitive operation

Maximum ergonomics



Uncompromising quality

Versatile functionality

Innovative technology

Open interfaces

Table of contents

A new approach to workstations	4 – 5
The system in detail	6 – 7
primus two system work tables	8 – 9
primus two system table for main base	10 – 15
primus two system table for main base left	16 – 17
primus two system table for main base right	18 – 19
System information	20 – 21
System set-up – main base	22 – 24
Main base wall	25
System shelf	26
System rear panel	27
System shelf element & system profile	28 – 29
System lighting & Orga-panel	30 – 33
System electronics	34 – 41
System accessories	42
Trim panel	43
primus two developed for R&D departments	44
primus two developed for training	44
Application examples	45
Meeting minutes	46 – 47

A new approach to workstations

Optimised work paths

Customisation

Perfect integration



primus two – a new stage in the evolution of laboratory work

The primus two workstation system is a new milestone for work in electrical laboratories. With a consistent focus on the user, primus two combines all aspects that are important for work in the areas of research and development, training, quality assurance and service: functionality, quality, ergonomics and design.

primus two was developed first and foremost for innovative people and companies – for those who work on the technologies of the future, research and do not settle for the status quo.

The concept of primus two also questions existing conventions and thus represents the next stage in the evolution of modern laboratory work. More than 50 years of experience give us at ELABO the expertise to combine innovative new developments with tried and tested solutions. The result: a laboratory workstation that will continue to meet all requirements in the future.



The system in detail





Breaks with old virtues, keeps what works

The primus two workstation system is the result of decades of experience in the development and application of laboratory workstations. Robust quality, ergonomic working and well thought-out design – this is what our products have always been known for. With its fundamental reorientation, primus two takes these values to a new level.

A new approach to ergonomics

With the main base operator console, primus two moves the control elements closer to the user. They are located directly above the table top, which is available with motorised height adjustment as an option. The advantage: all frequently recurring work is carried out within the user's immediate reach – tiring settings in an elevated position are thus reduced to a minimum.

We want you to be able to continue using your existing standalone measuring and inspection devices comfortably. Which is why primus two is equipped with

height-adjustable flex board shelves. Mounted directly on the operator console, they can be individually adjusted to a comfortable height. With an OPC-UA connection, you can easily operate your devices from the touch screen of the operator console.

Eyes have a lot of work to do

Your employees spend a lot of time at the laboratory workstation. This makes a harmonious appearance all the more important. We ensure this with a pleasantly uncluttered design that only focuses on what is important for the work. For permanently connected devices, the corresponding sockets are located outside the field of view on the rear of the main base operator console. In line with the motto "clean is better than dirty", the electrical fuses of the workstation system are concealed behind a cover that can be opened at the touch of a button. In order to make the workstation even more inviting, we equip it with individually designed background panels on request.

primus two system work tables

primus two system work tables

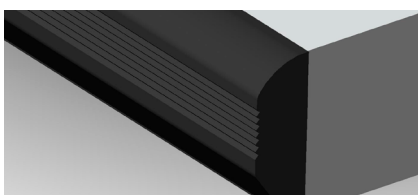


- Height of system work table adjustable by electric motor, with maintenance-free spindle drive
- Recessed cable flap with brush strip (main base left / right version)
- Right and left cable flap with brush strip 300 x 100 mm (main base version)
- Table top anti-glare, abrasion-resistant and heat-resistant to DIN EN 438
- Table top 30mm with 0.8mm HPL laminate
- Lifting columns in ELABO design with a lifting capacity of 2500N per column
- Underbench cabinet can be mounted on the right, centre and left

ELABO colorline table edge, exchangeable

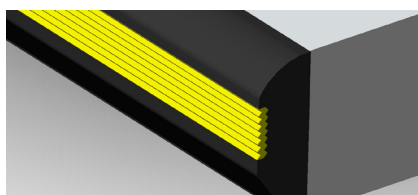
Customised table design is possible thanks to a selection of front edges

Basic variant



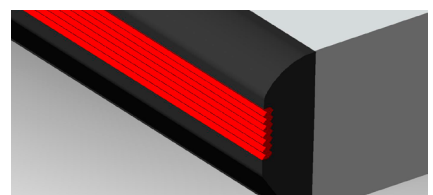
anthracite grey

ESD version



yellow

Alternative



red

primus two system work tables

primus two system work tables



- Multifunctional system work table with 4 aluminium table legs, two of them with internal cable ducts and the possibility of mounting System 80 insert panels
- Table top anti-glare, abrasion-resistant and heat-resistant to DIN EN 438
- Table top 30mm with 0.8mm HPL laminate
- primus two system profile with heavy-duty slots all the way round
- Recessed cable flap with brush strip (main base left / right version)
- Right and left cable flap with brush strip 300 x 100 mm (main base version)
- Underbench cabinet can be mounted on the right, centre and left
- Stable, welded steel frame with additional cross strut for absolute stability

The **primus two** colour concept:

Wood elements Signal white / similar to RAL9003



Steel elements Anthracite grey / RAL 7016

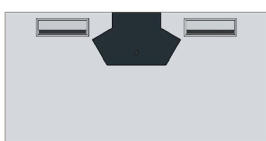


Profiles Anodised aluminium



primus two system table

primus two system table for main base – height adjustable by electric motor



- Prepared for fitting the primus two main base
- Table top 30 mm, HPL 0.8 mm glare-free, abrasion-resistant to EN 438
- Two recessed cable flaps 300 x 100 mm left and right with brush strips
- Large-volume cable tray 150 x 175 mm with front access
- Colorline front edge, exchangeable, anthracite
- Leveller for compensating uneven floors
- Electromotive height adjustment
- Minimum and maximum height programmable
- Lifting capacity 2500 N per column
- Load capacity up to 250 kg surface load
- Travel speed 9 mm/s
- ESD variant for EPA facilities according to DIN EN 61340-5-1 Part 5-1 with yellow exchangeable colorline front edge

Height 750 - 1200 mm

Basic			
Dimensions W x D mm	1600 x 800	1800 x 800	2000 x 800
Order ref.	H0-M3C.EC	H0-M3B.EC	H0-M3A.EC

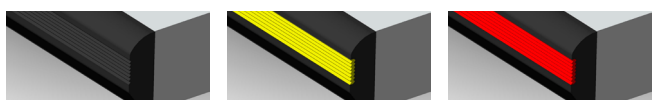
ESD ⚠			
Dimensions W x D mm	1600 x 800	1800 x 800	2000 x 800
Order ref.	H1-M3C.EC	H1-M3B.EC	H1-M3A.EC

Basic			
Dimensions W x D mm	1600 x 900	1800 x 900	2000 x 900
Order ref.	H0-M4C.EC	H0-M4B.EC	H0-M4A.EC

ESD ⚠			
Dimensions W x D mm	1600 x 900	1800 x 900	2000 x 900
Order ref.	H1-M4C.EC	H1-M4B.EC	H1-M4A.EC

Basic			
Dimensions W x D mm	1600 x 1000	1800 x 1000	2000 x 1000
Order ref.	H0-M5C.EC	H0-M5B.EC	H0-M5A.EC

ESD ⚠			
Dimensions W x D mm	1600 x 1000	1800 x 1000	2000 x 1000
Order ref.	H1-M5C.EC	H1-M5B.EC	H1-M5A.EC



Standard

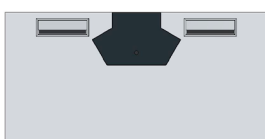
ESD variant

Option: red table edge

For the red table edge option, add "c" to the order reference

primus two system table

primus two system table for main base



- Prepared for fitting the primus two main base
- Table top 30 mm, HPL 0.8 mm glare-free, abrasion-resistant to EN 438
- Two recessed cable flaps 300 x 100 mm left and right with brush strips
- Large-volume cable tray 150 x 175 mm with front access
- Possibility of through-wiring when installed in rows
- Rear table legs as system profile column with integrated cable duct, can be fitted with System 80 panels
- Heavy-duty slots in the table legs for the attachment of accessories
- Colorline front edge, exchangeable, anthracite
- Leveller for compensating uneven floors
- Front table legs can be moved towards the rear for more leg room
- Load capacity up to 500 kg surface load
- ESD variant for EPA facilities according to DIN EN 61340-5-1 Part 5-1 with yellow exchangeable colorline front edge

Height 750 mm

Basic			
Dimensions W x D mm	1600 x 800	1800 x 800	2000 x 800
Order ref.	H0-M3C.K	H0-M3B.K	H0-M3A.K

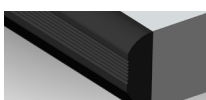
ESD ⚠			
Dimensions W x D mm	1600 x 800	1800 x 800	2000 x 800
Order ref.	H1-M3C.K	H1-M3B.K	H1-M3A.K

Basic			
Dimensions W x D mm	1600 x 900	1800 x 900	2000 x 900
Order ref.	H0-M4C.K	H0-M4B.K	H0-M4A.K

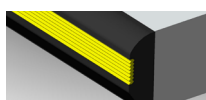
ESD ⚠			
Dimensions W x D mm	1600 x 900	1800 x 900	2000 x 900
Order ref.	H1-M4C.K	H1-M4B.K	H1-M4A.K

Basic			
Dimensions W x D mm	1600 x 1000	1800 x 1000	2000 x 1000
Order ref.	H0-M5C.K	H0-M5B.K	H0-M5A.K

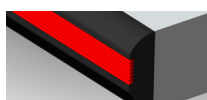
ESD ⚠			
Dimensions W x D mm	1600 x 1000	1800 x 1000	2000 x 1000
Order ref.	H1-M5C.K	H1-M5B.K	H1-M5A.K



Standard



ESD variant



Option: red table edge

For the red table edge option, add "c" to the order reference

primus two system table

primus two system table curved for main base – height adjustable by electric motor



- Prepared for fitting the primus two main base
- Table top 30 mm, HPL 0.8 mm glare-free, abrasion-resistant to EN 438
- Two recessed cable flaps 300 x 100 mm left and right with brush strips
- Table top "curved" for perfect ergonomics
- Large-volume cable tray 150 x 175 mm with front access
- Colorline front edge, exchangeable, anthracite
- Leveller for compensating uneven floors
- Electromotive height adjustment
- Minimum and maximum height programmable
- Lifting capacity 2500 N per column
- Load capacity up to 250 kg surface load
- Travel speed 9 mm/s
- ESD variant for EPA facilities according to DIN EN 61340-5-1 Part 5-1 with yellow exchangeable colorline front edge

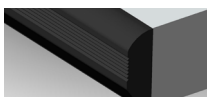
Height 750 - 1200 mm

Basic			
Dimensions W x D mm	1600 x 900/800	1800 x 900/800	2000 x 900/800
Order ref.	H0-M7C.EC	H0-M7B.EC	H0-M7A.EC

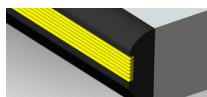
ESD ⚠			
Dimensions W x D mm	1600 x 900/800	1800 x 900/800	2000 x 900/800
Order ref.	H1-M7C.EC	H1-M7B.EC	H1-M7A.EC

Basic			
Dimensions W x D mm	1600 x 1000/900	1800 x 1000/900	2000 x 1000/900
Order ref.	H0-M9C.EC	H0-M9B.EC	H0-M9A.EC

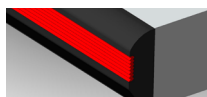
ESD ⚠			
Dimensions W x D mm	1600 x 1000/900	1800 x 1000/900	2000 x 1000/900
Order ref.	H1-M9C.EC	H1-M9B.EC	H1-M9A.EC



Standard



ESD variant



Option: red table edge

For the red table edge option, add "c" to the order reference

primus two system table

primus two system table curved for main base



- Prepared for fitting the primus two main base
- Table top 30 mm, HPL 0.8 mm glare-free, abrasion-resistant to EN 438
- Two recessed cable flaps 300 x 100 mm left and right with brush strips
- Table top "curved" for perfect ergonomics
- Large-volume cable tray 150 x 175 mm with front access
- Possibility of through-wiring when installed in rows
- Rear table legs as system profile column with integrated cable duct, can be fitted with System 80 panels
- Heavy-duty slots in the table legs for the attachment of accessories
- Colorline front edge, exchangeable, anthracite
- Leveller for compensating uneven floors
- Front table legs can be moved towards the rear for more leg room
- Load capacity up to 500 kg surface load
- ESD variant for EPA facilities according to DIN EN 61340-5-1 Part 5-1 with yellow exchangeable colorline front edge

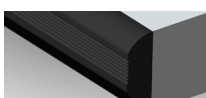
Height 750 mm

Basic			
Dimensions W x D mm	1600 x 900/800	1800 x 900/800	2000 x 900/800
Order ref.	H0-M7C.K	H0-M7B.K	H0-M7A.K

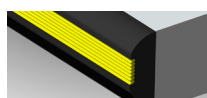
ESD ⚡			
Dimensions W x D mm	1600 x 900/800	1800 x 900/800	2000 x 900/800
Order ref.	H1-M7C.K	H1-M7B.K	H1-M7A.K

Basic			
Dimensions W x D mm	1600 x 1000/900	1800 x 1000/900	2000 x 1000/900
Order ref.	H0-M9C.K	H0-M9B.K	H0-M9A.K

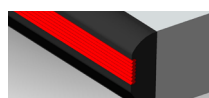
ESD ⚡			
Dimensions W x D mm	1600 x 1000/900	1800 x 1000/900	2000 x 1000/900
Order ref.	H1-M9C.K	H1-M9B.K	H1-M9A.K



Standard



ESD variant



Option: red table edge

For the red table edge option, add "c" to the order reference

primus two system table

primus two system table curved for main base – height adjustable by electric motor



- Prepared for fitting the primus two main base
- Table top 30 mm, HPL 0.8 mm glare-free, abrasion-resistant to EN 438
- Two recessed cable flaps 300 x 100 mm left and right with brush strips
- Table top "curved" for perfect ergonomics
- Large-volume cable tray 150 x 175 mm with front access
- Colorline front edge, exchangeable, anthracite
- Leveller for compensating uneven floors
- Electromotive height adjustment
- Minimum and maximum height programmable
- Lifting capacity 2500 N per column
- Load capacity up to 250 kg surface load
- Travel speed 9 mm/s
- ESD variant for EPA facilities according to DIN EN 61340-5-1 Part 5-1 with yellow exchangeable colorline front edge

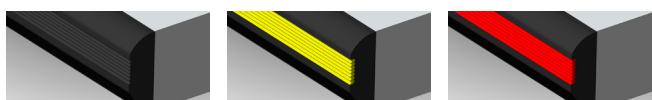
Height 750 - 1200 mm

Basic			
Dimensions W x D mm	1600 x 800/900	1800 x 800/900	2000 x 800/900
Order ref.	H0-M6C.EC	H0-M6B.EC	H0-M6A.EC

ESD ⚠			
Dimensions W x D mm	1600 x 800/900	1800 x 800/900	2000 x 800/900
Order ref.	H1-M6C.EC	H1-M6B.EC	H1-M6A.EC

Basic			
Dimensions W x D mm	1600 x 900/1000	1800 x 900/1000	2000 x 900/1000
Order ref.	H0-M8C.EC	H0-M8B.EC	H0-M8A.EC

ESD ⚠			
Dimensions W x D mm	1600 x 900/1000	1800 x 900/1000	2000 x 900/1000
Order ref.	H1-M8C.EC	H1-M8B.EC	H1-M8A.EC



Standard

ESD variant

Option: red table edge

For the red table edge option, add "c" to the order reference

primus two system table

primus two system table curved for main base



- Prepared for fitting the primus two main base
- Table top 30 mm, HPL 0.8 mm glare-free, abrasion-resistant to EN 438
- Two recessed cable flaps 300 x 100 mm left and right with brush strips
- Table top "curved" for perfect ergonomics
- Large-volume cable tray 150 x 175 mm with front access
- Possibility of through-wiring when installed in rows
- Rear table legs as system profile column with integrated cable duct, can be fitted with System 80 panels
- Heavy-duty slots in the table legs for the attachment of accessories
- Colorline front edge, exchangeable, anthracite
- Leveller for compensating uneven floors
- Front table legs can be moved towards the rear for more leg room
- Load capacity up to 500 kg surface load
- ESD variant for EPA facilities according to DIN EN 61340-5-1 Part 5-1 with yellow exchangeable colorline front edge

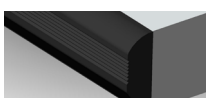
Height 750 mm

Basic			
Dimensions W x D mm	1600 x 800/900	1800 x 800/900	2000 x 800/900
Order ref.	H0-M6C.K	H0-M6B.K	H0-M6A.K

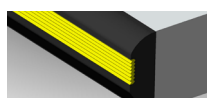
ESD ⚠			
Dimensions W x D mm	1600 x 800/900	1800 x 800/900	2000 x 800/900
Order ref.	H1-M6C.K	H1-M6B.K	H1-M6A.K

Basic			
Dimensions W x D mm	1600 x 900/1000	1800 x 900/1000	2000 x 900/1000
Order ref.	H0-M8C.K	H0-M8B.K	H0-M8A.K

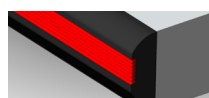
ESD ⚠			
Dimensions W x D mm	1600 x 900/1000	1800 x 900/1000	2000 x 900/1000
Order ref.	H1-M8C.K	H1-M8B.K	H1-M8A.K



Standard



ESD variant



Option: red table edge

For the red table edge option, add "c" to the order reference

primus two system table

primus two system table for main base left – height adjustable by electric motor



- Prepared for fitting the primus two main base
- Table top 30 mm, HPL 0.8 mm glare-free, abrasion-resistant to EN 438
- Two recessed cable flaps 300 x 100 mm left and right with brush strips
- Large-volume cable tray 150 x 175 mm with front access
- Colorline front edge, exchangeable, anthracite
- Leveller for compensating uneven floors
- Electromotive height adjustment
- Minimum and maximum height programmable
- Lifting capacity 2500 N per column
- Load capacity up to 250 kg surface load
- Travel speed 9 mm/s
- ESD variant for EPA facilities according to DIN EN 61340-5-1 Part 5-1 with yellow exchangeable colorline front edge

Height 750 - 1200 mm

Basic					
Dimensions W x D mm	1200 x 800	1500 x 800	1600 x 800	1800 x 800	2000 x 800
Order ref.	H0-ML3E.KEC	H0-ML3D.KEC	H0-ML3C.KEC	H0-ML3B.KEC	H0-ML3A.KEC

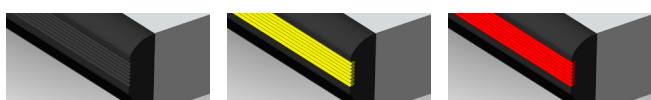
ESD ⚠					
Dimensions W x D mm	1200 x 800	1500 x 800	1600 x 800	1800 x 800	2000 x 800
Order ref.	H1-ML3E.KEC	H1-ML3D.KEC	H1-ML3C.KEC	H1-ML3B.KEC	H1-ML3A.KEC

Basic					
Dimensions W x D mm	1200 x 900	1500 x 900	1600 x 900	1800 x 900	2000 x 900
Order ref.	H0-ML4E.KEC	H0-ML4D.KEC	H0-ML4C.KEC	H0-ML4B.KEC	H0-ML4A.KEC

ESD ⚠					
Dimensions W x D mm	1200 x 900	1500 x 900	1600 x 900	1800 x 900	2000 x 900
Order ref.	H1-ML4E.KEC	H1-ML4D.KEC	H1-ML4C.KEC	H1-ML4B.KEC	H1-ML4A.KEC

Basic					
Dimensions W x D mm	1200 x 1000	1500 x 1000	1600 x 1000	1800 x 1000	2000 x 1000
Order ref.	H0-ML5E.KEC	H0-ML5D.KEC	H0-ML5C.KEC	H0-ML5B.KEC	H0-ML5A.KEC

ESD ⚠					
Dimensions W x D mm	1200 x 1000	1500 x 1000	1600 x 1000	1800 x 1000	2000 x 1000
Order ref.	H1-ML5E.KEC	H1-ML5D.KEC	H1-ML5C.KEC	H1-ML5B.KEC	H1-ML5A.KEC



Standard

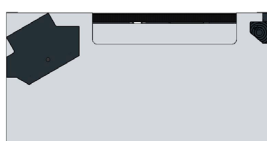
ESD variant

Option: red table edge

For the red table edge option, add "c" to the order reference

primus two system table

primus two system table for main base left



- Prepared for fitting the primus two main base
- Table top 30 mm, HPL 0.8 mm glare-free, abrasion-resistant to EN 438
- Two recessed cable flaps 300 x 100 mm left and right with brush strips
- Large-volume cable tray 150 x 175 mm with front access
- Possibility of through-wiring when installed in rows
- Rear table legs as system profile column with integrated cable duct, can be fitted with System 80 panels
- Heavy-duty slots in the table legs for the attachment of accessories
- Colorline front edge, exchangeable, anthracite
- Leveller for compensating uneven floors
- Front table legs can be moved towards the rear for more leg room
- Load capacity up to 500 kg surface load
- ESD variant for EPA facilities according to DIN EN 61340-5-1 Part 5-1 with yellow exchangeable colorline front edge

Height 750 mm

Basic					
Dimensions W x D mm	1200 x 800	1500 x 800	1600 x 800	1800 x 800	2000 x 800
Order ref.	H0-ML3E.K	H0-ML3D.K	H0-ML3C.K	H0-ML3B.K	H0-ML3A.K

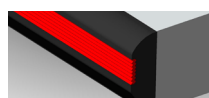
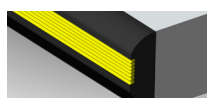
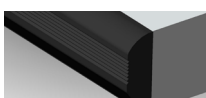
ESD					
Dimensions W x D mm	1200 x 800	1500 x 800	1600 x 800	1800 x 800	2000 x 800
Order ref.	H1-ML3E.K	H1-ML3D.K	H1-ML3C.K	H1-ML3B.K	H1-ML3A.K

Basic					
Dimensions W x D mm	1200 x 900	1500 x 900	1600 x 900	1800 x 900	2000 x 900
Order ref.	H0-ML4E.K	H0-ML4D.K	H0-ML4C.K	H0-ML4B.K	H0-ML4A.K

ESD					
Dimensions W x D mm	1200 x 900	1500 x 900	1600 x 900	1800 x 900	2000 x 900
Order ref.	H1-ML4E.K	H1-ML4D.K	H1-ML4C.K	H1-ML4B.K	H1-ML4A.K

Basic					
Dimensions W x D mm	1200 x 1000	1500 x 1000	1600 x 1000	1800 x 1000	2000 x 1000
Order ref.	H0-ML5E.K	H0-ML5D.K	H0-ML5C.K	H0-ML5B.K	H0-ML5A.K

ESD					
Dimensions W x D mm	1200 x 1000	1500 x 1000	1600 x 1000	1800 x 1000	2000 x 1000
Order ref.	H1-ML5E.K	H1-ML5D.K	H1-ML5C.K	H1-ML5B.K	H1-ML5A.K



Standard

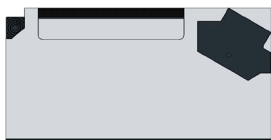
ESD variant

Option: red table edge

For the red table edge option, add "c" to the order reference

primus two system table

primus two system table for main base right – height adjustable by electric motor



- Prepared for fitting the primus two main base
- Table top 30 mm, HPL 0.8 mm glare-free, abrasion-resistant to EN 438
- Two recessed cable flaps 300 x 100 mm left and right with brush strips
- Large-volume cable tray 150 x 175 mm with front access
- Colorline front edge, exchangeable, anthracite
- Leveller for compensating uneven floors
- Electromotive height adjustment
- Minimum and maximum height programmable
- Lifting capacity 2500 N per column
- Load capacity up to 250 kg surface load
- Travel speed 9 mm/s
- ESD variant for EPA facilities according to DIN EN 61340-5-1 Part 5-1 with yellow exchangeable colorline front edge

Height 750 - 1200 mm

Basic					
Dimensions W x D mm	1200 x 800	1500 x 800	1600 x 800	1800 x 800	2000 x 800
Order ref.	H0-MR3E.KEC	H0-MR3D.KEC	H0-MR3C.KEC	H0-MR3B.KEC	H0-MR3A.KEC

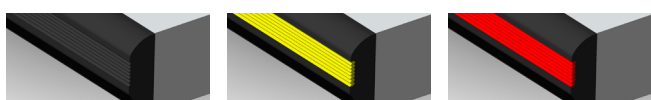
ESD ⚡					
Dimensions W x D mm	1200 x 800	1500 x 800	1600 x 800	1800 x 800	2000 x 800
Order ref.	H1-MR3E.KEC	H1-MR3D.KEC	H1-MR3C.KEC	H1-MR3B.KEC	H1-MR3A.KEC

Basic					
Dimensions W x D mm	1200 x 900	1500 x 900	1600 x 900	1800 x 900	2000 x 900
Order ref.	H0-MR4E.KEC	H0-MR4D.KEC	H0-MR4C.KEC	H0-MR4B.KEC	H0-MR4A.KEC

ESD ⚡					
Dimensions W x D mm	1200 x 900	1500 x 900	1600 x 900	1800 x 900	2000 x 900
Order ref.	H1-MR4E.KEC	H1-MR4D.KEC	H1-MR4C.KEC	H1-MR4B.KEC	H1-MR4A.KEC

Basic					
Dimensions W x D mm	1200 x 1000	1500 x 1000	1600 x 1000	1800 x 1000	2000 x 1000
Order ref.	H0-MR5E.KEC	H0-MR5D.KEC	H0-MR5C.KEC	H0-MR5B.KEC	H0-MR5A.KEC

ESD ⚡					
Dimensions W x D mm	1200 x 1000	1500 x 1000	1600 x 1000	1800 x 1000	2000 x 1000
Order ref.	H1-MR5E.KEC	H1-MR5D.KEC	H1-MR5C.KEC	H1-MR5B.KEC	H1-MR5A.KEC



Standard

ESD variant

Option: red table edge

For the red table edge option, add "c" to the order reference

primus two system table

primus two system table for main base right



- Prepared for fitting the primus two main base
- Table top 30 mm, HPL 0.8 mm glare-free, abrasion-resistant to EN 438
- Two recessed cable flaps 300 x 100 mm left and right with brush strips
- Large-volume cable tray 150 x 175 mm with front access
- Possibility of through-wiring when installed in rows
- Rear table legs as system profile column with integrated cable duct, can be fitted with System 80 panels
- Heavy-duty slots in the table legs for the attachment of accessories
- Colorline front edge, exchangeable, anthracite
- Leveller for compensating uneven floors
- Front table legs can be moved towards the rear for more leg room
- Load capacity up to 500 kg surface load
- ESD variant for EPA facilities according to DIN EN 61340-5-1 Part 5-1 with yellow exchangeable colorline front edge

Height 750 mm

Basic					
Dimensions W x D mm	1200 x 800	1500 x 800	1600 x 800	1800 x 800	2000 x 800
Order ref.	H0-MR3E.K	H0-MR3D.K	H0-MR3C.K	H0-MR3B.K	H0-MR3A.K

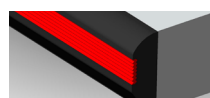
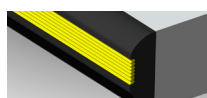
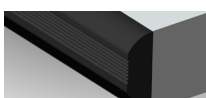
ESD ⚠					
Dimensions W x D mm	1200 x 800	1500 x 800	1600 x 800	1800 x 800	2000 x 800
Order ref.	H1-MR3E.K	H1-MR3D.K	H1-MR3C.K	H1-MR3B.K	H1-MR3A.K

Basic					
Dimensions W x D mm	1200 x 900	1500 x 900	1600 x 900	1800 x 900	2000 x 900
Order ref.	H0-MR4E.K	H0-MR4D.K	H0-MR4C.K	H0-MR4B.K	H0-MR4A.K

ESD ⚠					
Dimensions W x D mm	1200 x 900	1500 x 900	1600 x 900	1800 x 900	2000 x 900
Order ref.	H1-MR4E.K	H1-MR4D.K	H1-MR4C.K	H1-MR4B.K	H1-MR4A.K

Basic					
Dimensions W x D mm	1200 x 1000	1500 x 1000	1600 x 1000	1800 x 1000	2000 x 1000
Order ref.	H0-MR5E.K	H0-MR5D.K	H0-MR5C.K	H0-MR5B.K	H0-MR5A.K

ESD ⚠					
Dimensions W x D mm	1200 x 1000	1500 x 1000	1600 x 1000	1800 x 1000	2000 x 1000
Order ref.	H1-MR5E.K	H1-MR5D.K	H1-MR5C.K	H1-MR5B.K	H1-MR5A.K



Standard

ESD variant

Option: red table edge

For the red table edge option, add "c" to the order reference

System information

User-oriented

Out of the box approach

Everything in view

Main base

Front view

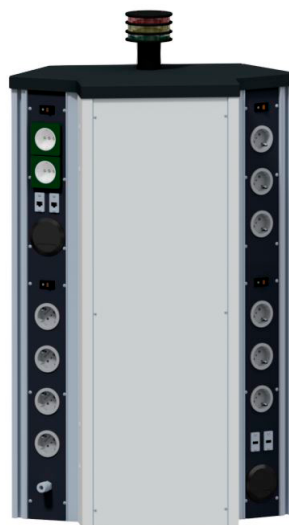
- Signal light for indicating the operating state to beyond the workstation
- Heavy-duty slots on the right and left for the attachment of flex boards or monitor holders



- Residual current circuit breaker and line fuse integrated behind the elegant flap
- Modern switch-on panel with control elements
- Emergency-stop button can act on the table, room or both as required
- Subrack for the integration of 3HU modules
- Base control with 10.1" touch display
- primus two power unit
- Connection board for all types of interfaces
 - RJ 45
 - USB
 - Schuko / country-specific variants
 - HDMI
 - etc.

Rear view

- Rear panel, screwed, made of 2 mm aluminium sheet, powder-coated



- System 80 module panels can be integrated on the right and left
- Integration of:
 - Schuko sockets or various country-specific variants
 - CEE 16A sockets
 - RJ45
 - USB
 - HDMI
 - Compressed air
 - MC sockets for voltage taps
 - Isolating transformers
 - etc.

System set-up

System set-up – main base



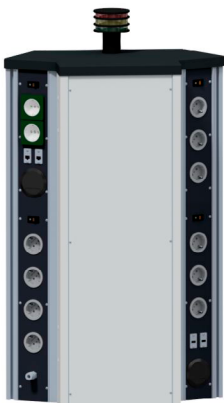
- Centrally installed main base for fitting ELABO insert panels and System 274 devices
- System channels on the rear left and right for equipping with ELABO insert panels from the System 80 range
- Overall equippable height 810 mm
- Perfectly shaped aluminium profiles with a total of 5 slots for the attachment of flex boards and/or accessories
- Detachable back panel made of coated aluminium sheet
- Guide rails can be attached within the main base
- Optionally with or without preparation for the integration of the main base light in the top panel
- ESD version suitable for EPA facilities (cover panel and rear wooden body in conductive version)

Standard	
Dimensions W x D x H mm	540 x 275 x 836
Order ref.	H3-B.1

Prepared for main base light	
Dimensions W x D x H mm	540 x 320 x 836
Order ref.	H3-B

Workstation solutions

Equipment example



System set-up

System set-up – main base left



- Centrally installed main base for fitting ELABO insert panels and System 274 devices
- One system channel each on the front left and rear right for equipping with ELABO insert panels from the System 80 range
- Overall equippable height 810 mm
- Perfectly shaped aluminium profiles with a total of 5 slots for the attachment of flex boards and/or accessories
- Detachable back panel made of coated aluminium sheet
- Guide rails can be attached within the main base
- Optionally with or without preparation for the integration of the main base light in the top panel
- ESD version suitable for EPA facilities (cover panel and rear wooden body in conductive version)

Standard	
Dimensions W x D x H mm	540 x 275 x 836
Order ref.	H3-L.1

Prepared for main base light	
Dimensions W x D x H mm	540 x 320 x 836
Order ref.	H3-L

Equipment example



System set-up

System set-up – main base right



- Centrally installed main base for fitting ELABO insert panels and System 274 devices
- One system channel each on the front right and rear left for equipping with ELABO insert panels from the System 80 range
- Overall equippable height 810 mm
- Perfectly shaped aluminium profiles with a total of 5 slots for the attachment of flex boards and/or accessories
- Detachable back panel made of coated aluminium sheet
- Guide rails can be attached within the main base
- Optionally with or without preparation for the integration of the main base light in the top panel
- ESD version suitable for EPA facilities (cover panel and rear wooden body in conductive version)

Standard	
Dimensions W x D x H mm	540 x 275 x 836
Order ref.	H3-R.1

Prepared for main base light	
Dimensions W x D x H mm	540 x 320 x 836
Order ref.	H3-R

Equipment example



Main base wall

Main base wall



- Centrally installed main base for fitting ELABO insert panels and System 274 devices
- One system channel each on the front left and rear right for equipping with ELABO insert panels from the System 80 range
- Overall equippable height 810 mm
- Perfectly shaped aluminium profiles with a total of 5 slots for attaching flex boards and/or accessories
- Detachable back panel made of coated aluminium sheet
- Guide rails can be attached within the main base
- Optionally with or without preparation for the integration of the main base light in the cover panel
- ESD version suitable for EPA facilities (cover panel and rear wooden body in conductive version)

Note: Variants and prices available on request.

System shelf

System shelf flex board left



- System flex board, 19mm thick with ergonomically shaped edge
- Flex board infinitely height-adjustable
- Surface load capacity up to 20 kg
- Board frame prepared for integration of the LED board lights
- Signal white decor
- ESD variant for EPA facilities
- Cantilever board frame made of die-cast aluminium, ensures maximum stability
- Board frame powder-coated in RAL 7016 anthracite, conductive

Standard	
Dimensions W x D x H mm	530 x 400 x 77
Order ref.	H2-F1.LI

ESD 	
Dimensions W x D x H mm	530 x 400 x 77
Order ref.	H3-F1.LI

System shelf flex board right



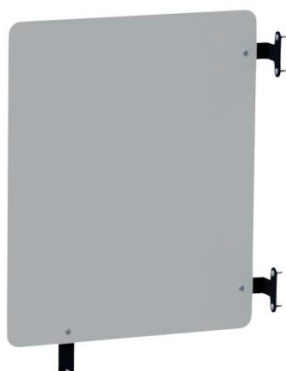
- System flex board, 19mm thick with ergonomically shaped edge
- Flex board infinitely height-adjustable
- Surface load capacity up to 20 kg
- Board frame prepared for integration of the LED board lights
- Signal white decor
- ESD variant for EPA facilities
- Cantilever board frame made of die-cast aluminium, ensures maximum stability
- Board frame powder-coated in RAL 7016 anthracite, conductive

Standard	
Dimensions W x D x H mm	530 x 400 x 77
Order ref.	H2-F1.RE


ESD 	
Dimensions W x D x H mm	530 x 400 x 77
Order ref.	H3-F1.RE


System rear panel

System rear panel base panel left



- Base panel as privacy screen
- 3mm aluminium sheet, conductive powder-coated
- 3-point attachment
- Optionally available with custom print
- Suitable for EPA facilities


RAL9010 pure white 	Table width 1600 mm	Table width 1800 mm	Table width 2000 mm
Dimensions W x D x H mm	620 x 3 x 760	720 x 3 x 760	820 x 3 x 760
Order ref.	H2-P01C.LI	H2-P01B.LI	H2-P01A.LI


RAL 7016 anthracite grey 	Table width 1600 mm	Table width 1800 mm	Table width 2000 mm
Dimensions W x D x H mm	620 x 3 x 760	720 x 3 x 760	820 x 3 x 760
Order ref.	H2-P02C.LI	H2-P02B.LI	H2-P02A.LI

System rear panel base panel right



- Base panel as privacy screen
- 3mm aluminium sheet, conductive powder-coated
- 3-point attachment
- Optionally available with custom print
- Suitable for EPA facilities

RAL9010 pure white 	Table width 1600 mm	Table width 1800 mm	Table width 2000 mm
Dimensions W x D x H mm	620 x 3 x 760	720 x 3 x 760	620 x 3 x 760
Order ref.	H2-P01C.RE	H2-P01B.RE	H2-P01A.RE

RAL 7016 anthracite grey 	Table width 1600 mm	Table width 1800 mm	Table width 2000 mm
Dimensions W x D x H mm	620 x 3 x 760	720 x 3 x 760	620 x 3 x 760
Order ref.	H2-P02C.RE	H2-P02B.RE	H2-P02A.RE

System shelf element


System shelf element for main base left



- System shelf made of 30 mm HPL-coated panel
- Suitable for main base left
- Integrated LED lighting
- Integrative Orga-panel
- Shelf element prepared for downward cable routing at the side
- Surface load 100 kg
- Signal white decor
- ESD variant for EPA facilities

Note: Including system carrier 60mm, Orga-panel sold separately

Standard	Table width 1600 mm	Table width 1800 mm	Table width 2000 mm
Dimensions W x D x H mm	1158 x 400 x 90	1358 x 400 x 90	1558 x 400 x 90
Order ref.	H2-2KC.ML	H2-2KB.ML	H2-2KA.ML

ESD 	Table width 1600 mm	Table width 1800 mm	Table width 2000 mm
Dimensions W x D x H mm	1158 x 400 x 90	1358 x 400 x 90	1558 x 400 x 90
Order ref.	H3-2KC.ML	H3-2KB.ML	H3-2KA.ML

primus two system profile



- For equipping with 480 mm profile panel
- For mounting on the right-hand side

Standard	
Length mm	570
Order ref.	H5-KP570-1ST

System shelf element

System shelf element for main base right



- System shelf made of 30 mm HPL-coated panel
- Suitable for main base left
- Integrated LED lighting
- Integrative Orga-panel
- Shelf element prepared for downward cable routing at the side
- Surface load 100 kg
- Signal white decor
- ESD variant for EPA facilities

Note: Including system carrier 60mm, Orga-panel sold separately

Standard	Table width 1600 mm	Table width 1800 mm	Table width 2000 mm
Dimensions W x D x H mm	1158 x 400 x 90	1358 x 400 x 90	1558 x 400 x 90
Order ref.	H2-2KC.MR	H2-2KB.MR	H2-2KA.MR

ESD ⚡	Table width 1600 mm	Table width 1800 mm	Table width 2000 mm
Dimensions W x D x H mm	1158 x 400 x 90	1358 x 400 x 90	1558 x 400 x 90
Order ref.	H3-2KC.MR	H3-2KB.MR	H3-2KA.MR

primus two system profile



- For equipping with 480 mm profile panel
- For mounting on the left-hand side

Standard	
Length mm	570
Order ref.	H5-KP570-1ST



Shows itself in a new light

An ergonomically designed workstation includes customised lighting. With primus two, your employees control the lighting individually in terms of intensity and colour temperature. Depending on the activity and time of day, primus two thus promotes concentration and ensures relaxed vision in natural light conditions.

The lighting at the workstation is divided into several sections, which can be individually adapted as required – depending on which activities the user normally carries out in which area of the workstation. The intuitive elution two control unit allows precise adjustment of the lighting conditions at the touch screen. These can be saved for different user profiles. Once saved, each user can immediately access their preferred settings.

System lighting

System lighting base light



- Innovative LED lighting enables glare-free and homogeneous illumination of the work surface at all times
- Lighting concept comprising
 - Main light in main base
 - Board light under flex board left
 - Board light under flex board right
- Tilt angle of the board lights adjustable in the range of 0...25° for optimum table lighting or to avoid glare

■ Control panel function:

Local control for controlling all lighting elements

Control unit made of glass with touch functionality, integrated in the network panel

– Functions:

– ON / OFF

– Brightness from 10...100%

– Colour temperature from 3000–5000K

– Equipped as standard with LAN interface for remote control via the elution two software

– The individual light elements can be regulated separately in terms of brightness and colour temperature by means of an interface

■ Technical data:

– Overall light output: 5500lm

– Power consumption: 70W

– CRI value: >90

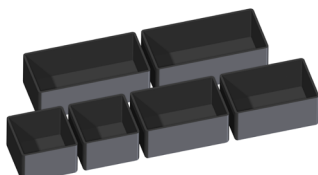
	Main light + flex light left + flex light right	Main light + flex light left	Main light + flex light right	Extension flex light left	Extension flex light right
Order ref.	H4-2M	H4-2M.L	H4-2M.R	H4-2N.L	H4-2N.R

System lighting

Orga-panel for main base right / left



Option: Small parts boxes K9-4B



- LED Orga light for mounting underneath a shelf element for main base right or left
- The LED light is operated via a touch unit integrated in the left cover cap
- Optional second control unit right available
- The light colour can be adjusted continuously from warm white (3000 K) to cold white (5000 K) via the touch control unit,
- CRI value = 95 (3000 K)
- Continuously dimmable from 0-100%
- The number of light segments depends on the panel width
- The light segments can be controlled individually and thus ensure perfectly adapted illumination
- Optional LAN interface available for remote control of the light via tablet
- Optional touch control unit available for additional operation of the LED light on the right-hand side
- Lockable drawer, can be integrated in a master-key system as an option
- Small parts boxes optionally available K9-4B
- Optimum cable routing thanks to cable guide

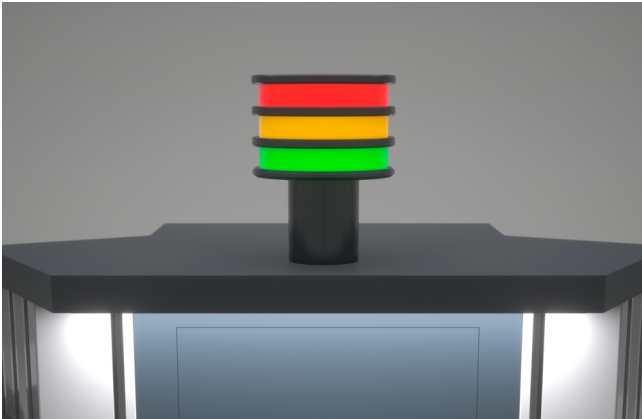
Orga-panel Control unit left	Table width 1600 mm	Table width 1800 mm	Table width 2000 mm
Dimensions W x D x H mm	926 x 400 x 40	1126 x 400 x 40	1326 x 400 x 40
Segments	2	2	3
suitable for	H2-2KC.MR / ML	H2-2KB.MR / ML	H2-2KA.MR / ML
Order ref.	H4-1FA	H4-1E.A	H4-1D.A_B140

Orga-panel Control unit left & right	Table width 1600 mm	Table width 1800 mm	Table width 2000 mm
Dimensions W x D x H mm	926 x 400 x 40	1126 x 400 x 40	1326 x 400 x 40
Segments	2	2	3
suitable for	H2-2KC.MR / ML	H2-2KB.MR / ML	H2-2KA.MR / ML
Order ref.	H4-1FA+RE	H4-1E.A+RE	H4-1D.A_B140+RE






Option	LAN interface for LED light
Order ref.	H4-1Y

System lighting

Status light

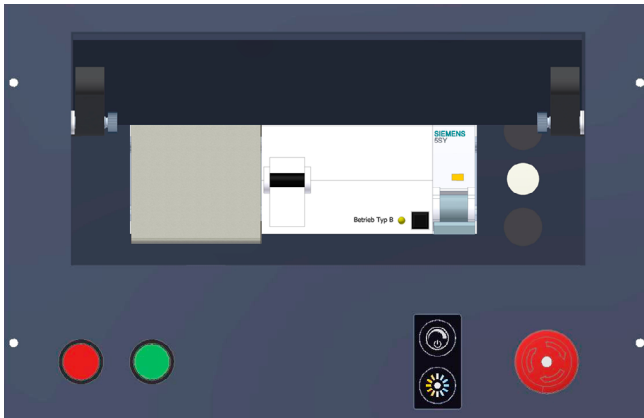


- Signal light
- Luminous RGB LED segments
- All-round security, visible to all
- 3 plexiglass elements in satin finish with black segmentation
- Diameter 90 mm, height 101 mm
- Different operating states can be indicated
- RGB version with integrated power supply and LED
- Mounted on main base
- Mounted on primus two system profile
- Other colour combinations available on request
- Tamper-proof housing construction

Version					
230 volts	All red	All green	Red, red, green	Red, yellow, green	Red, blue, green
Order ref.	01-94.T230-RRR	01-94.T230-GGG	01-94.T230-GRR	01-94.T230-GYR	01-94.T230-GBR

System electronics

System electronics switch-on panel, 1-phase



- Central switch-on and fuse unit for main base
- Residual current circuit breaker and line circuit breaker installed behind flap
- Flap with magnetic holder and push-to-open functionality
- Integrated live wire indicator light
- Switch-on panel always installed at the top
- Prepared for the installation of the local control unit for base light

- Standard equipment:
 - Illuminated green on-button
 - Illuminated red off-button
 - 1 live wire indicator light
- Dimensions:
 - Width: 274 mm
 - Height: 180 mm
- Features:
 - Residual current circuit breaker 25A
 - Line circuit breaker 16A type B
 - Emergency stop

Front panel colour: RAL7015 / conductive coated

Residual current circuit breaker	30mA type A	30mA type B
Order ref.	H6-0A1A16B00.2	H6-0A1B16B00.2

System electronics

System electronics switch-on panel, 3-phase



- Central switch-on and fuse unit for main base
- Residual current circuit breaker and line circuit breaker installed behind flap
- Flap with magnetic holder and push-to-open functionality
- Integrated live wire indicator lights
- Switch-on panel always installed at the top
- Prepared for the installation of the local control unit for base light

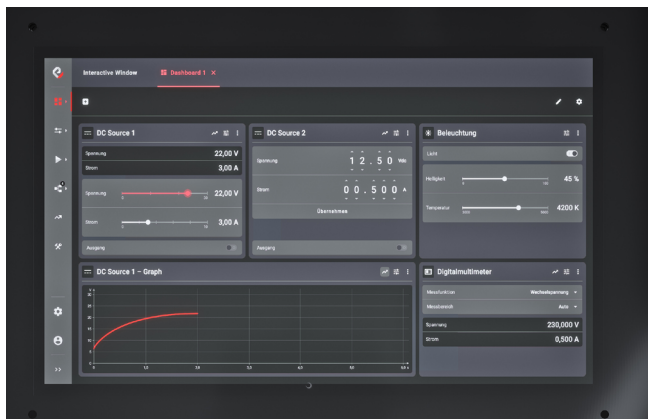
- Standard equipment:
 - Illuminated green on-button
 - Illuminated red off-button
 - 3 live wire indicator lights
- Dimensions:
 - Width: 274 mm
 - Height: 180 mm
- Features:
 - Residual current circuit breaker 25A
 - Line circuit breaker 16A type B
 - Emergency stop

Front panel colour: RAL7015 / conductive coated

Residual current circuit breaker	30mA type A	30mA type B
Order ref.	H6-0A3A16B00.2	H6-0A3B16B00.2

System electronics

Control panel



- 10.1" touch display
- Resolution 1280 x 800 pixels
- Chemically hardened and anti-reflective front glass
- Invisible attachment mechanism with quick-turn function
- HDMI connection

	10" display
Dimensions W x D x H mm	274 x 150 x 180
Order ref.	H6-1D

Base control



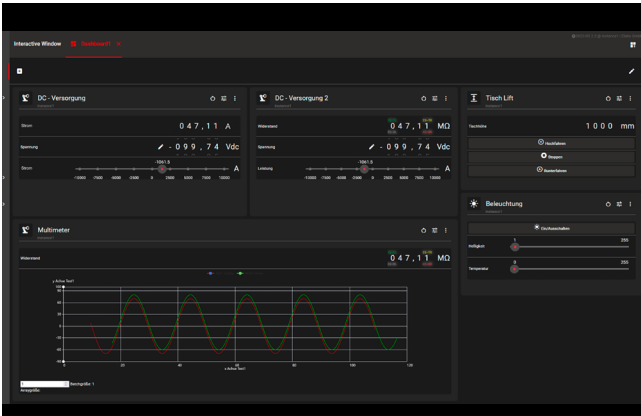
Example illustration

- Ultra-compact single board computer with high performance
- 1.5 GHz Quad-Core processor
- 4 GB RAM
- USB / LAN interfaces
- HDMI connection

Note: The base control is mounted on the rear of the control panel.

	Computer system
Dimensions W x D x H mm	163 x 128 x 65
Order ref.	H6-1B

elution two lab



- Platform-independent software with numerous applications
- Browser-based front-end with responsive design
- Multiple operation function for computer, smartphone and tablet
- Open interface technology for commercially available measuring and supply devices
- Dashboarding for individual measuring and inspection tasks
- Comprehensive assistance function
- Data storage and logging

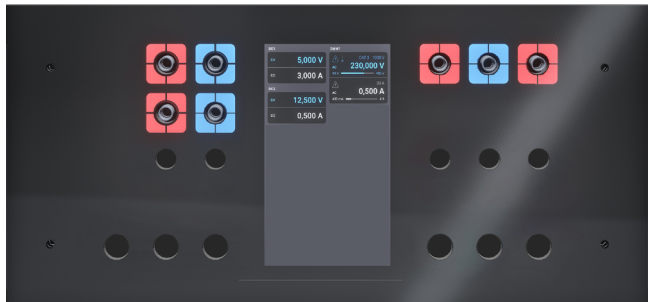
The elution two lab contains the following modules and features:

- Interactive window module
- Flow runner module
- Flow editor module
- Dashboard module
- MQTT client interface

Article	Order ref.
elution two lab licence package	N4-1C
Analysis module	N4-2E
Report module	N4-2F
Approve feature	N4-3A.1
Error handling feature	N4-3A.4
Stop and go feature	N4-3A.7
Variables feature	N4-3B.1
Parallel flow feature	N4-3B.2
Exchange data feature	N4-3B.3
Order connector interface	N4-3C.1
I/O interface	N4-3C.2
OPC UA client interface	N4-3C.3
OPC UA Server interface	N4-3C.4
Serial interface	N4-3C.6
Vision interface	N4-3C.7

System electronics

Power unit basic



- Multifunctional device with
 - 2x DC supply
 - 1x digital multimeter
- 4.3" display for direct display of actual and status values
- DC supplies with longitudinal control
- Dual multimeter with 5/4 digits with simultaneous current/voltage measurement
- Illuminated 4mm safety sockets with situational animation in 4-square mode

	Power unit basic
Dimensions W x D x H mm	274 x 196 x 128.5
Order ref.	H6-1PB

- Supply 1+2

Output voltage	0...48 V	Setting resolution 1mV	Ripple 100µV RMS
Output current	0...10A	Setting resolution 1mA	Ripple 200µA RMS
Output power	max. 200W / auto-ranging operation		
Regulation time	12µs with load jump 0-100%		
Protection	Short-circuit-proof / resistant to external voltage		
Precision	0.15%		

- Digital multimeter 1

Voltage measurement	4, 40, 400, 1000 V	DC AC 20...500Hz
Current measurement	400µA, 4mA, 40mA, 400mA, 4A, 20A	DC AC 20...500Hz
Power measurement	apparent power, real power	
Resistance measurement	400, 4k, 40k, 400k 4M, 40MOhm, diode measurement	
Frequency measurement	100kHz	
Temperature measurement	-100...250°C	
Basic precision	0.01%	

- Other data:

Chemically hardened and anti-reflective front glass	
Interface	LAN interface
Installation	Invisible attachment mechanism with quick-turn function
Supply	Nominal voltage 230V +/- 10% / 49-61Hz

Note: The power unit can also be integrated directly into a primus two cockpit 3HU.

The following software is absolutely necessary for the fault-free use of the power unit basic and power unit high end:

elution two single device (N4-1J)

For more information, please contact your specialist consultant or visit <https://www.elabo.de/fachberater>

Power unit high end



- Multifunctional device with
 - 3x DC supply
 - 2x digital multimeter
 - 1x frequency generator with counter
- 4.3" display for direct display of actual and status values
- DC supplies with longitudinal control
- Dual multimeter with 5/4 digits with simultaneous current/voltage measurement
- High-precision frequency generator
- Illuminated 4mm safety sockets with situational animation in 4-square mode

	Power unit high end
Dimensions W x D x H mm	274 x 196 x 128.5
Order ref.	H6-1P.H

- Supply 1-3

Output voltage	0...48 V	Setting resolution 1mV	Ripple 100µV RMS
Output current	0...10A	Setting resolution 1mA	Ripple 200µA RMS
Output power	max. 200W / auto-ranging operation		
Regulation time	12µs with load jump 0-100%		
Protection	Short-circuit-proof / resistant to external voltage		
Precision	0.15%		

- Digital multimeter 1+2

Voltage measurement	4, 40, 400, 1000 V	DC AC 20...500Hz
Current measurement	400µA, 4mA, 40mA, 400mA, 4A, 20A	DC AC 20...500Hz
Power measurement	apparent power, real power	
Resistance measurement	400, 4k, 40k, 400k 4M, 40MOhm, diode measurement	
Frequency measurement	100kHz	
Temperature measurement	-100...250°C	
Basic precision	0.01%	

- Frequency generator

Signal shapes	Sine	10mHz...40MHz
		Triangle 10mHz...20MHz
		Saw blade + 10mHz...20MHz
		Saw blade - 10mHz...20MHz
		Rectangular 10mHz...20MHz
Arbitrary functionality		
Modulations	AM, FM, PWM, SWEEP AM Offset, Sweep, ext in 0..5V	
Output	30Vss	
Precision	50ppm	

- Frequency counter

Range	25MHz / 250MHz with prescaler
-------	-------------------------------

- Other data:

Chemically hardened and anti-reflective front glass	
Interface	LAN interface
Installation	Invisible attachment mechanism with quick-turn function
Supply	Nominal voltage 230V +/- 10% / 49-61Hz

System electronics

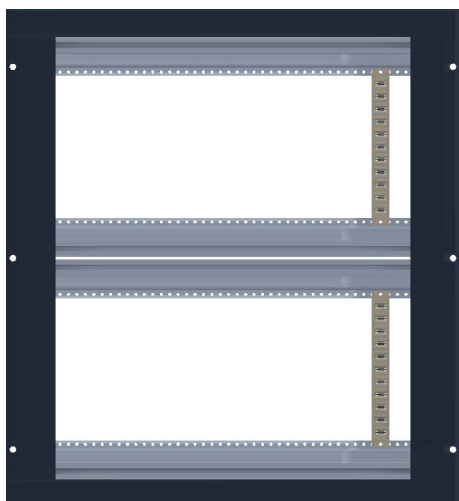
Single subrack



- Subrack for fitting insert panels or devices in 3HU format
- 3HU / 1 x 42HP

	Single
Dimensions W x D x H mm	274 x 196 x 150
Order ref.	H6-9T00.150.2

Double subrack



- Subrack for fitting insert panels or devices in 3HU format
- 3HU / 2 x 42HP

	Double
Dimensions W x D x H mm	274 x 196 x 300
Order ref.	H6-9T00.300.2

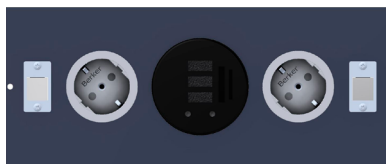
Blank panel



Dimensions W x D x H mm	274 x 3 x 60	274 x 3 x 90	274 x 3 x 111	274 x 3 x 120
Order ref.	H6-9L00.060.2	H6-9L00.090.2	H6-9L00.111.2	H6-9L00.120.2

System electronics

Connection panel



- 2x Schuko socket
- 1x multimedia socket
- 2x keystone installation frame

Dimensions W x D x H mm	274 x 100 x 90	274 x 100 x 111
Order ref.	H6-2A01.090.2	H6-2A01.111.2

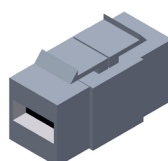
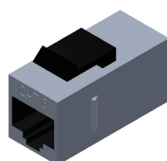
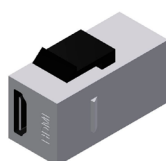
Connection panel



- 3x Schuko socket
- 4x keystone installation frame

Dimensions W x D x H mm	274 x 100 x 90	274 x 100 x 111
Order ref.	H6-2A00.090.2	H6-2A00.111.2

Keystone modules



HDMI

RJ45

USB

- Suitable for Keystone mounting frame
- Additional insert modules available on request

Module type	HDMI		
Order ref.	01-9K.HDMI-01		

Module type	RJ45 Cat 6	RJ45 Cat 6A UL	
Order ref.	01-9K.RJ45C6-01	01-9K.RJ45C6A-01	

Module type	USB 2.0 - A-socket > B-socket	USB 3.0 - A-socket > A-socket	USB-CTM socket - USB-CTM socket
Order ref.	01-9K.USB2.0-01	01-9K.USB3.0-01	01-9K.USB3.0-01

Connecting cables 2m

Connection cable type	Patch cable S/FTP Cat.6	USB connection cable 2.0 TYPE AA	USB connection cable 3.0 TYPE AA	USB connection cable 3.0 TYPE AC	HDMI cable rotatable 2x180°
Order ref.	01-9T.C6A-2M-GR	01-9U.2.0-2M-AA	01-9U.3.0-2M-AA	01-9U.3.X-2M-AC	01-9V.DREH-2M

Connecting cables 3m

Connection cable type	Patch cable S/FTP Cat.6	USB connection cable 2.0 TYPE AA	USB connection cable 3.0 TYPE AA	USB connection cable 3.0 TYPE AC	HDMI cable rotatable 2x180°
Order ref.	01-9T.C6A-3M-GR	01-9U.2.0-3M-AA	01-9U.3.0-3M-AA	01-9U.3.X-3M-AC	01-9V.DREH-3M

System accessories

System accessories energy chain



- Suitable for primus two
- Can be opened in outer radius with film hinge
- Chain length 1000 mm
- Connection element with integrated strain relief
- Dirt-repellent outer contour

Version	Cable tray mounted on runner for floor outlet	
Order ref.	H9-0E	
Version	Cable tray mounted on cable tray for row installation	
Order ref.	H9-0E.X01	
Version	Cable tray mounted on duct for wall attachment	
Order ref.	H9-0E.X02	
Version	For ceiling mounting max. length 1800mm mounted upper edge profile on ceiling – left-hand side	For ceiling mounting max. length 1800mm mounted upper edge profile on ceiling – right-hand side
Order ref.	H9-0E.X03-LI	H9-0E.X03-RE

Manual height adjustment switch



- Manual switch for Syncontrol control
- Functions:
 - 4-fold memory for saving up to 4 heights
 - UP / DOWN
 - Digital display of table height

Dimensions W x D mm	274 x 196 x 300
Order ref.	K9-0M.ECL_01

Socket set

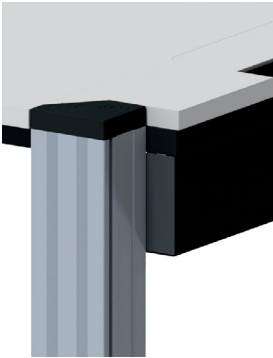


- Socket set comprising
 - 2 socket holders for the cable tray
 - 2 socket strips 3-fold Schuko
 - 1 connection cable Schuko 3 m
 - 1 connecting cable 0.5 m

Dimensions W x D mm	274 x 3 x 90
Order ref.	81-2X Z01

Trim panel

Trim panel



- For covering the standard cable duct at the side
- Made of sheet steel
- Powder-coated in anthracite grey

Version	For primus two workstations	For primus two height-adjustable workstations
Order ref.	H9-0A	H9-0A.EC

Bridging duct



- primus two bridging duct:
for connecting two primus two cable trays with table row set-up
- Made of sheet steel
- Powder-coated in anthracite grey
- Wooden top panel
- Including assembly material

Dimensions W x D mm	274 x 100 x 90
Order ref.	H9-0B

primus two developed for R&D departments

primus two developed for R&D departments



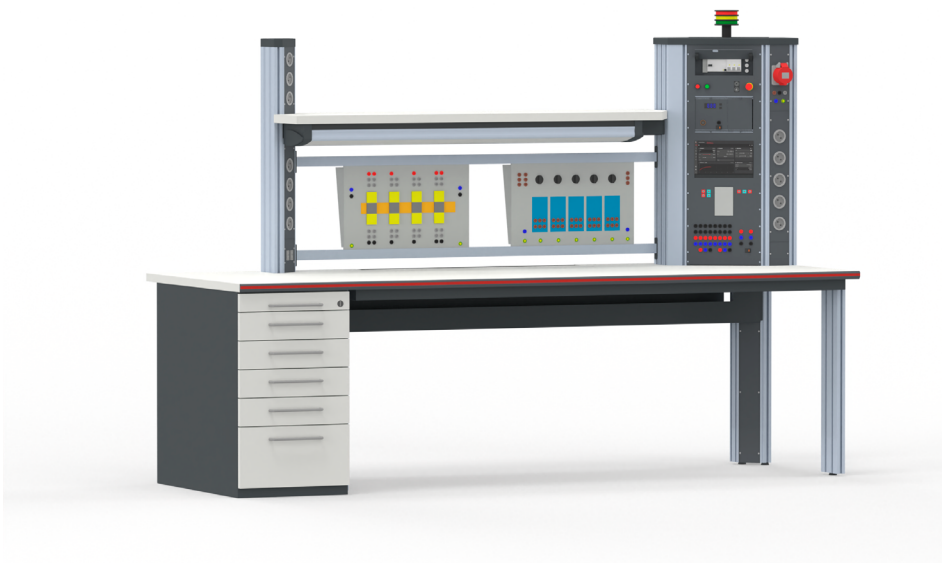
primus two developed for training



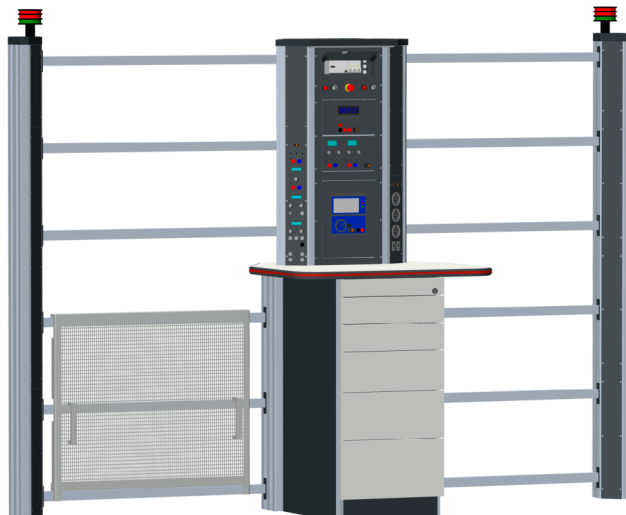
Workstation solutions

Application examples

primus two main base right



primus two main base wall





Meeting minutes

Participants:

Date:



ELABO switchboard:

+49 (0) 79 51 / 307 – 0

Or send your inquiry by e-mail to: **info@elabo.de**



elabo.de



elabo-shop.de



bott.de

www.elabo.de

ELABO GmbH – a Bott Group company

Roßfelder Straße 56, 74564 Crailsheim, Germany

E-Mail: info@elabo.de, Phone: +49 (0)79 51 / 307-0, Fax: +49 (0)79 51 / 307-66